



Annapolis

Haley & Aldrich's hub in Maryland.-

Offering engineering and environmental consulting from Annapolis in collaboration with teams across the country. -

Our Annapolis consultants focus on delivering geotechnical counseling, contaminated site management, and other

services locally and beyond. Their expertise includes:-

- [Brownfields](#)
- [Construction](#)
- [Contaminated site management](#)
- [Disaster and climate resilience services](#)
- [EHS compliance](#)
- [Sustainability](#)
- [Geotechnical engineering](#)
- [Lean consulting](#)
- [Water resources](#)

Haley & Aldrich has advised on many projects that benefit the Mid-Atlantic, including a [complex remediation project](#) for Loyola University in Baltimore and [a highway expansion](#) in Virginia.-

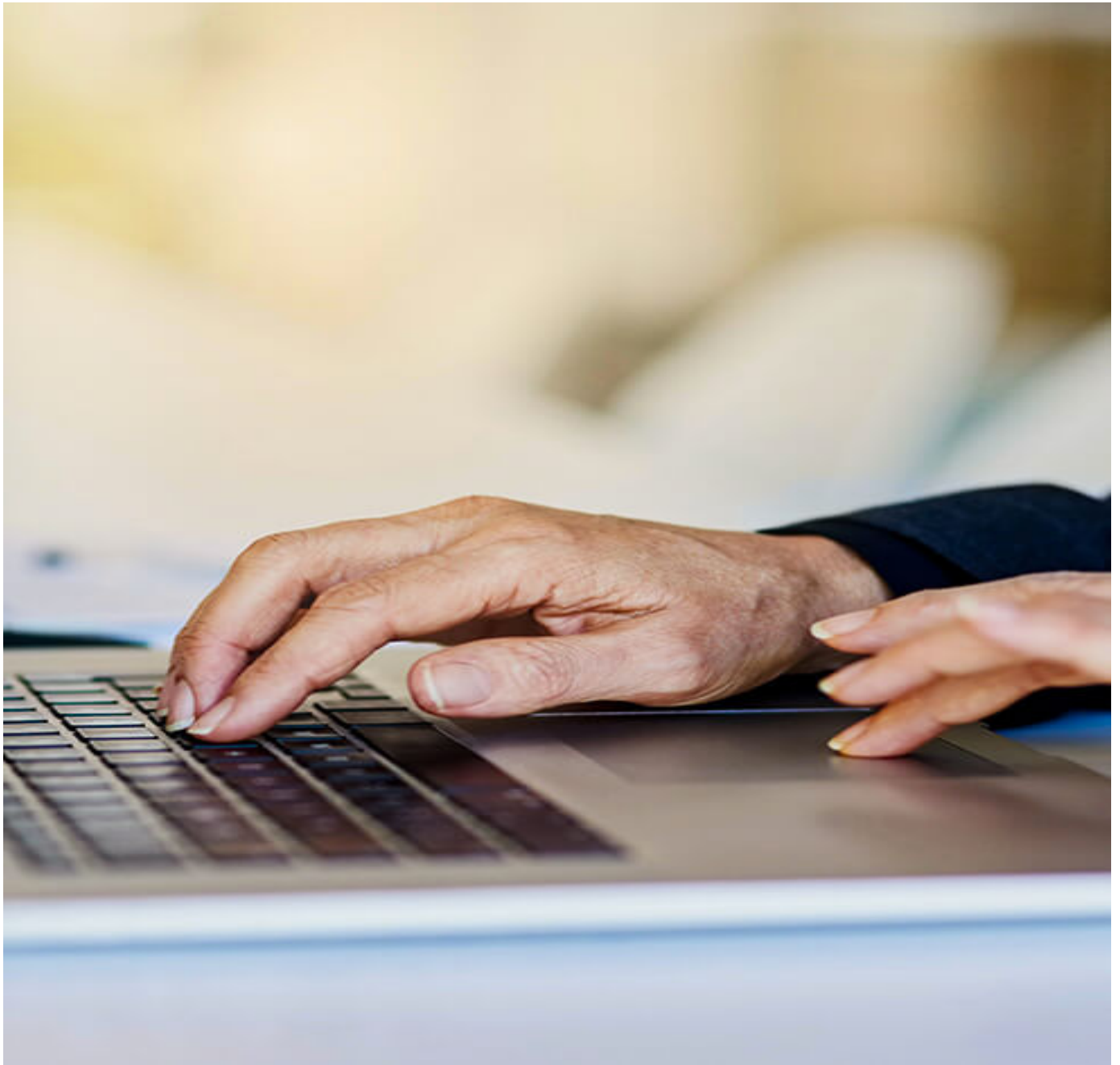
Haley & Aldrich
60 West Street, Suite 215-
Annapolis, MD 21401
Tel: 617.886.7400

Geometric Decoration

Image not found or type unknown

Geometric Decoration

Image not found or type unknown



Get in touch with Haley & Aldrich today