



Denver

Advising clients in Denver and nationally.

Serving clients in Colorado and beyond with geotechnical engineering and environmental services.

The Haley & Aldrich Denver office sits south of the city, near Cherry Creek State Park. From this base, our experts collaborate with team members around the country to advise on:

- [Brownfields](#)
- [Construction](#)
- [Contaminated site management](#)
- [Disaster and climate resilience services](#)
- [EHS compliance](#)
- [Sustainability](#)
- [Geotechnical engineering](#)
- [Lean consulting](#)
- [Water resources](#)

Distinct challenges often accompany construction, development, and environmental projects in the Denver area. Regulatory requirements, environmental concerns, and geologic conditions all play a crucial role in project planning and execution. Denver presents unique geotechnical complexities, and Haley & Aldrich experts understand fully that geotechnical engineering in Denver requires a custom approach.

Our team has extensive experience, with decades of expertise in geotechnical engineering and environmental consulting to support projects in Denver, throughout Colorado, and beyond. By combining geotechnical expertise with innovative environmental services, Haley & Aldrich delivers resilient, sustainable solutions that mitigate geologic hazards and support the future of Denver's structures and infrastructure.

Our team has consulted on a host of projects in the region, often providing integrated environmental and geotechnical engineering services. For a [mining client](#), for example, we brought together environmental consulting and construction services to save costs on the voluntary remediation of a complex closed site.

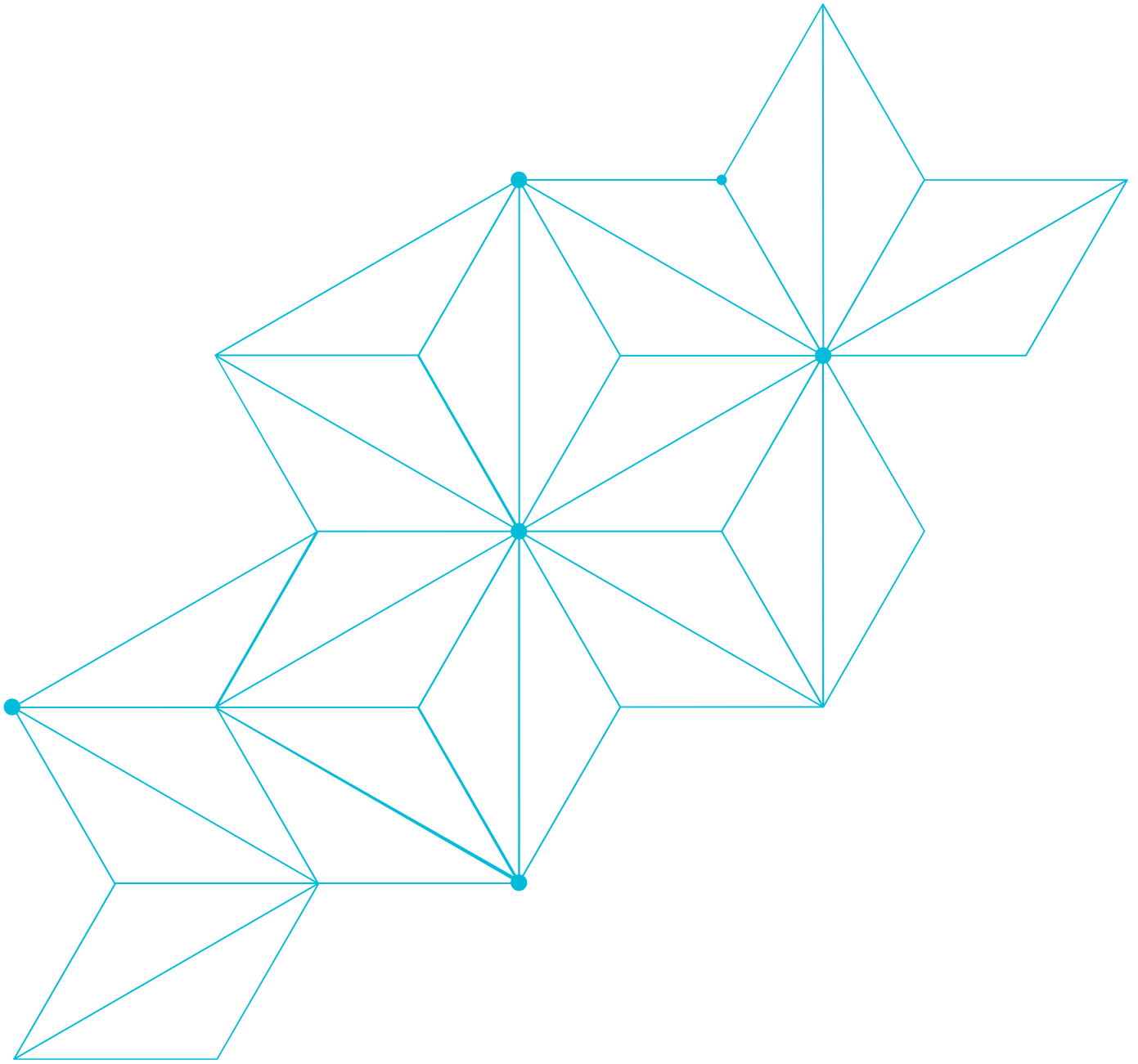


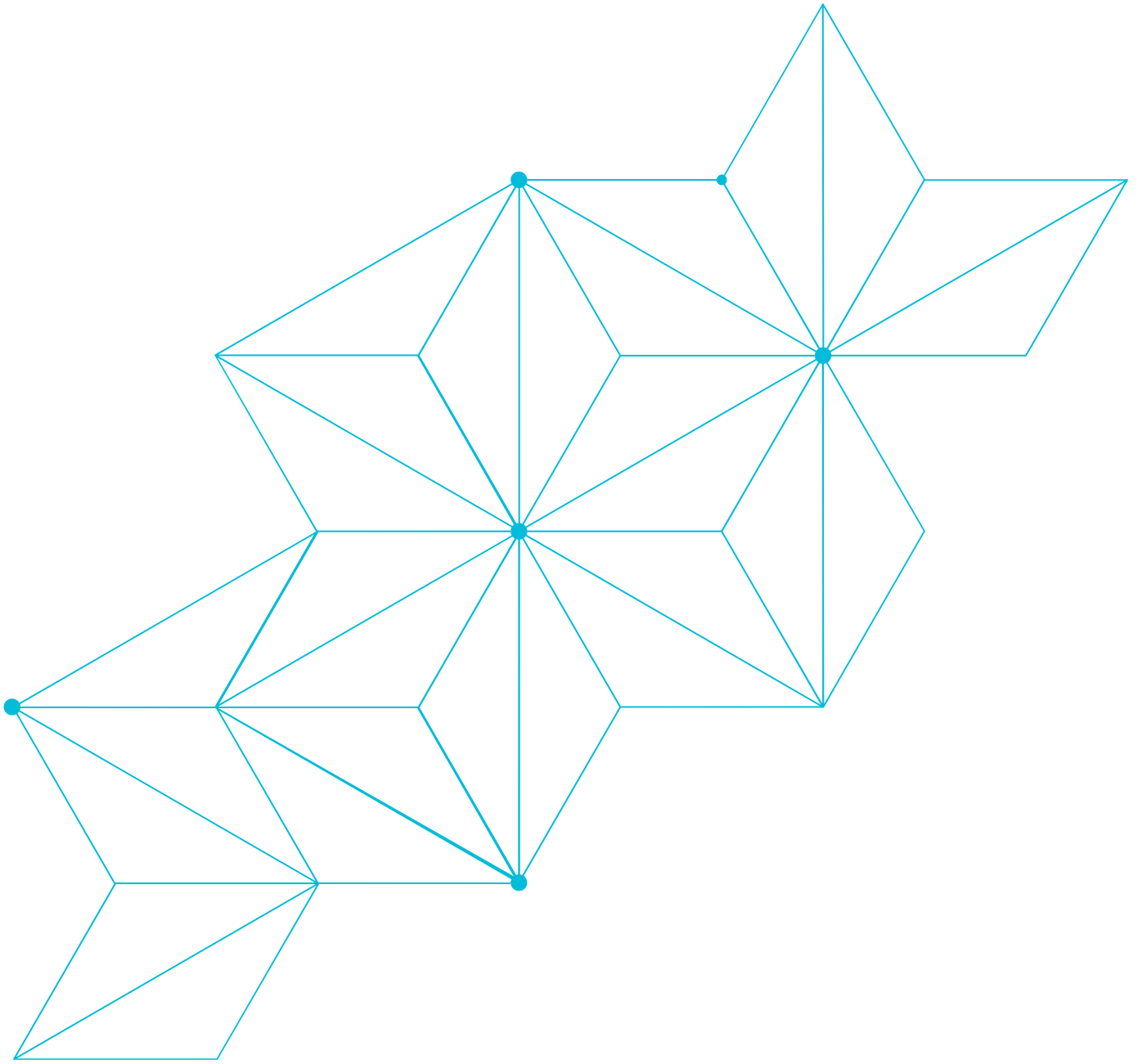
Haley & Aldrich

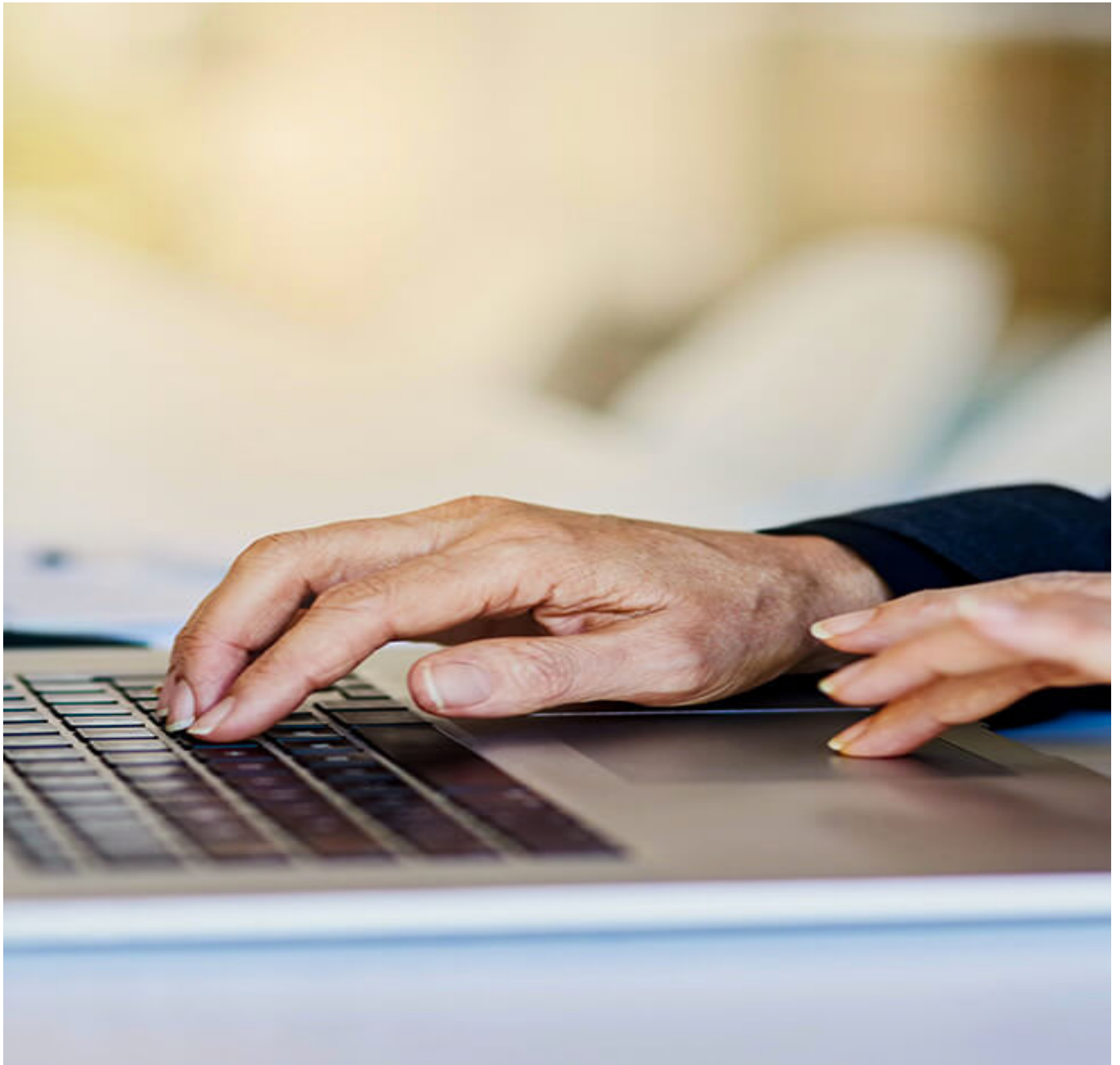
8101 E. Prentice Avenue, Suite 600

Greenwood Village, CO 80111

Tel: 720.616.4400







Get in touch with Haley & Aldrich today