



## Greenville

Haley & Aldrich's hub for South Carolina clients.

Clients rely on our geotechnical engineering and environmental consulting.

Located near downtown Greenville, the professionals in this Haley & Aldrich office partner with our teams around the country to advise on:

- [Brownfields](#)
- [Construction](#)
- [Contaminated site management](#)
- [Disaster and climate resilience services](#)
- [EHS compliance](#)
- [Sustainability](#)
- [Geotechnical engineering](#)
- [Lean consulting](#)
- [Water resources](#)

Among many other projects we've collaborated on in the area, our Greenville team helped [Central Electric Power Cooperative](#) install power cables underneath protected wetlands and historic trees using horizontal drilling tech so that it could guard against power outages.



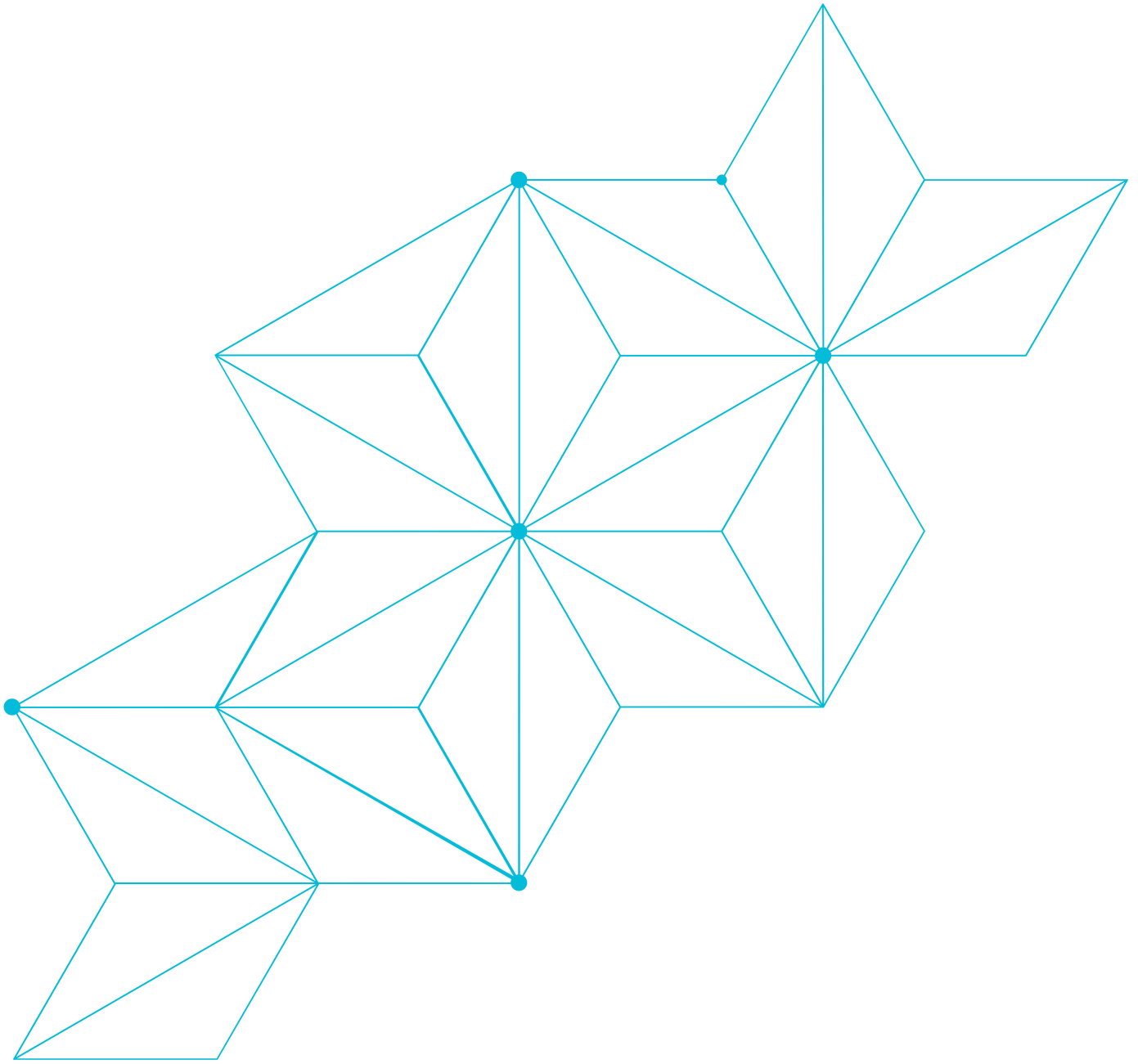
**Haley & Aldrich**

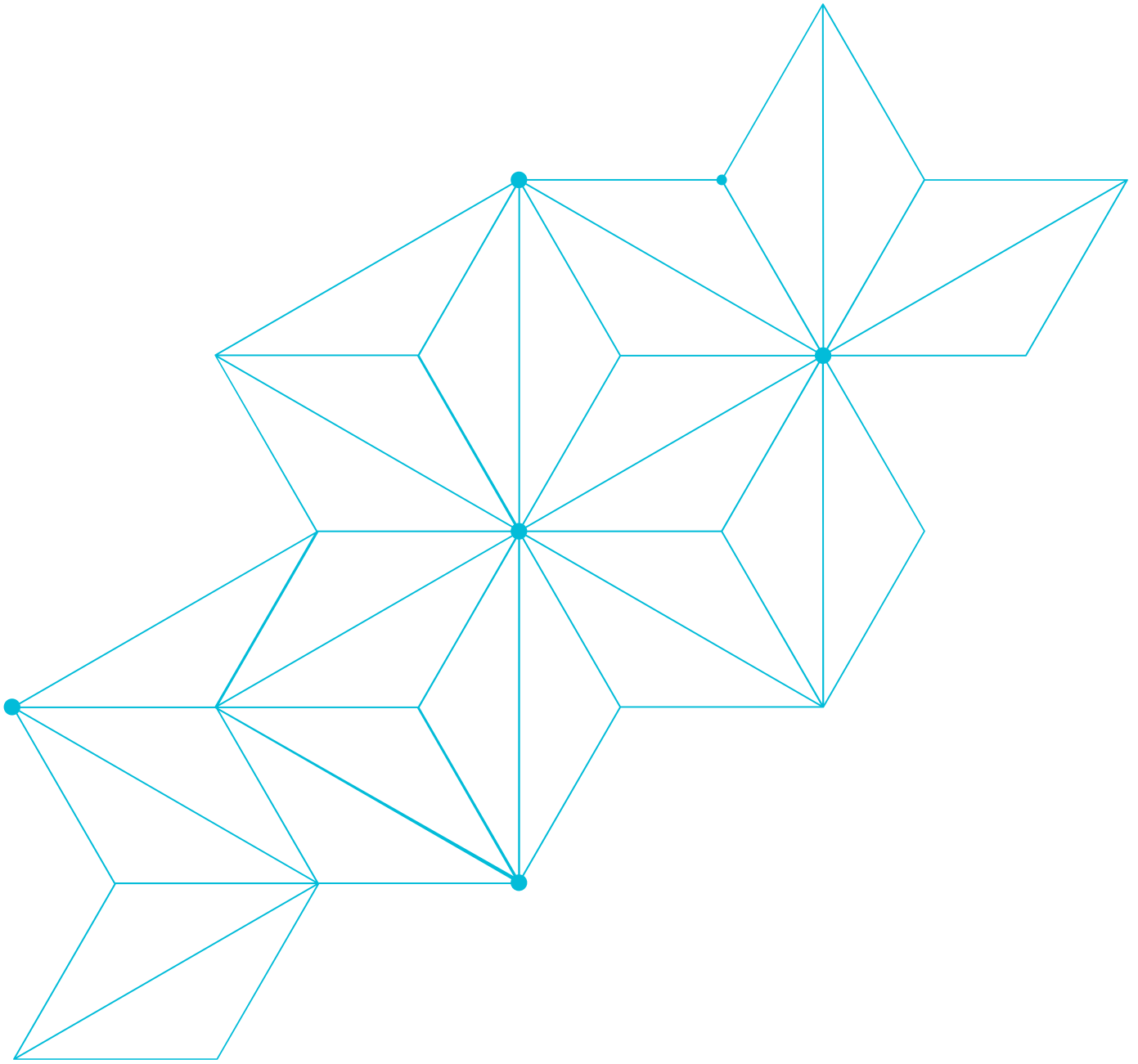
400 Augusta Street, Suite 100

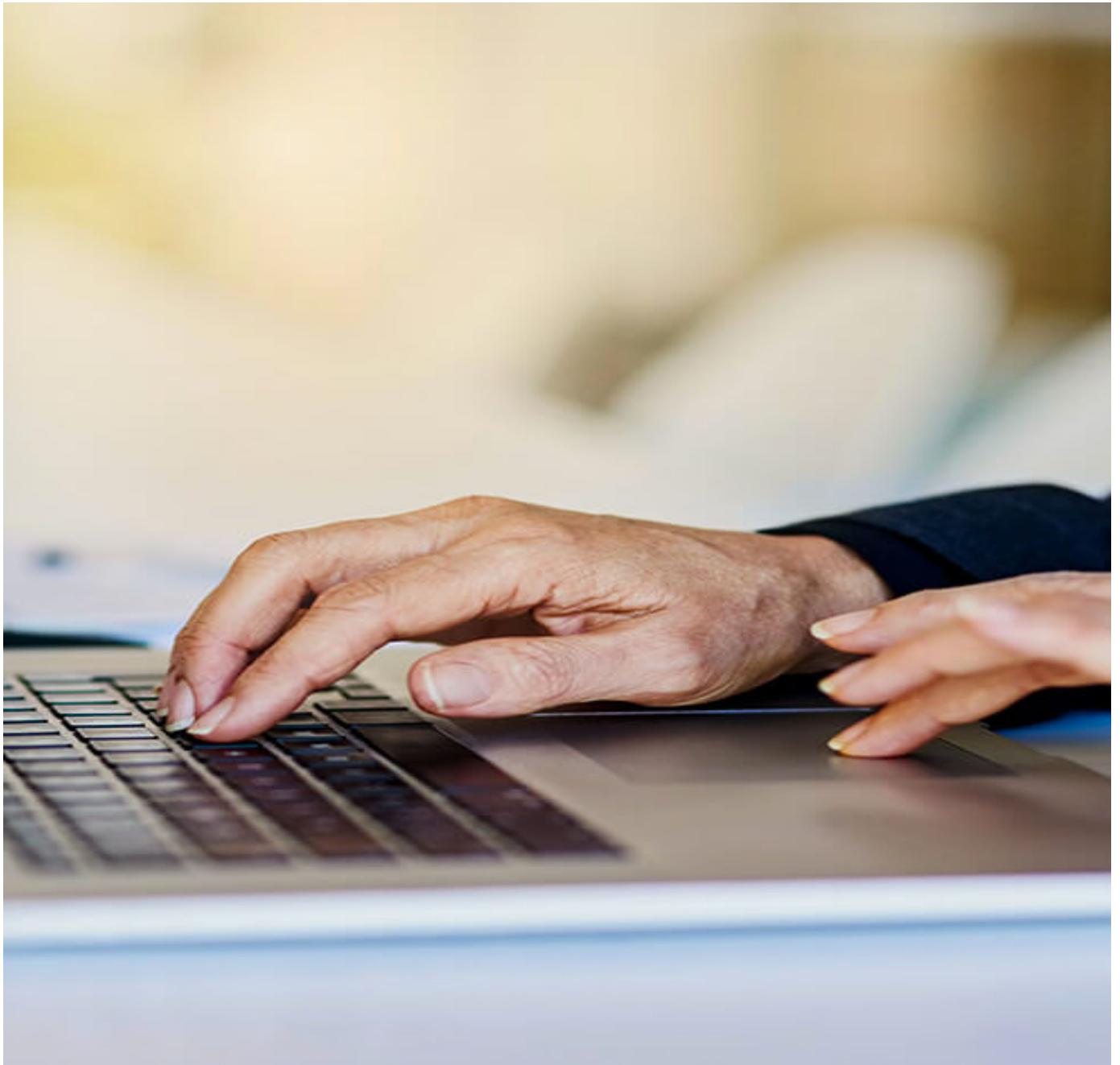
Greenville, SC 29601

Tel: 864.214.8750









Get in touch with Haley & Aldrich today