



Kansas City

A Haley & Aldrich hub for clients in the Midwest and beyond.

Clients rely on our geotechnical engineering and environmental consulting.

Located southwest of Kansas City, this Haley & Aldrich office provides a home base for consultants who specialize in contaminated site management, including:

- [Brownfields](#)
- [Construction](#)
- [Contaminated site management](#)
- [Disaster and climate resilience services](#)
- [EHS compliance](#)
- [Sustainability](#)
- [Geotechnical engineering](#)
- [Lean consulting](#)
- [Water resources](#)

Distinct geotechnical and environmental challenges come with the territory when you take on construction, development, and environmental projects in the Kansas City area – or anywhere in the Midwest. For example, expansive clay soils throughout Missouri and eastern Kansas can cause significant foundation movement, while seasonal freeze-thaw cycles and erosion-prone loess deposits further complicate site stability.

At Haley & Aldrich, we develop customized geotechnical solutions and provide environmental services to mitigate these risks while focusing on long-term project success. In addition to many other projects in the region, we helped a client [redevelop a Superfund site](#) into habitat for monarch butterflies – a project that exemplifies our commitment to client service and wise stewardship of resources.

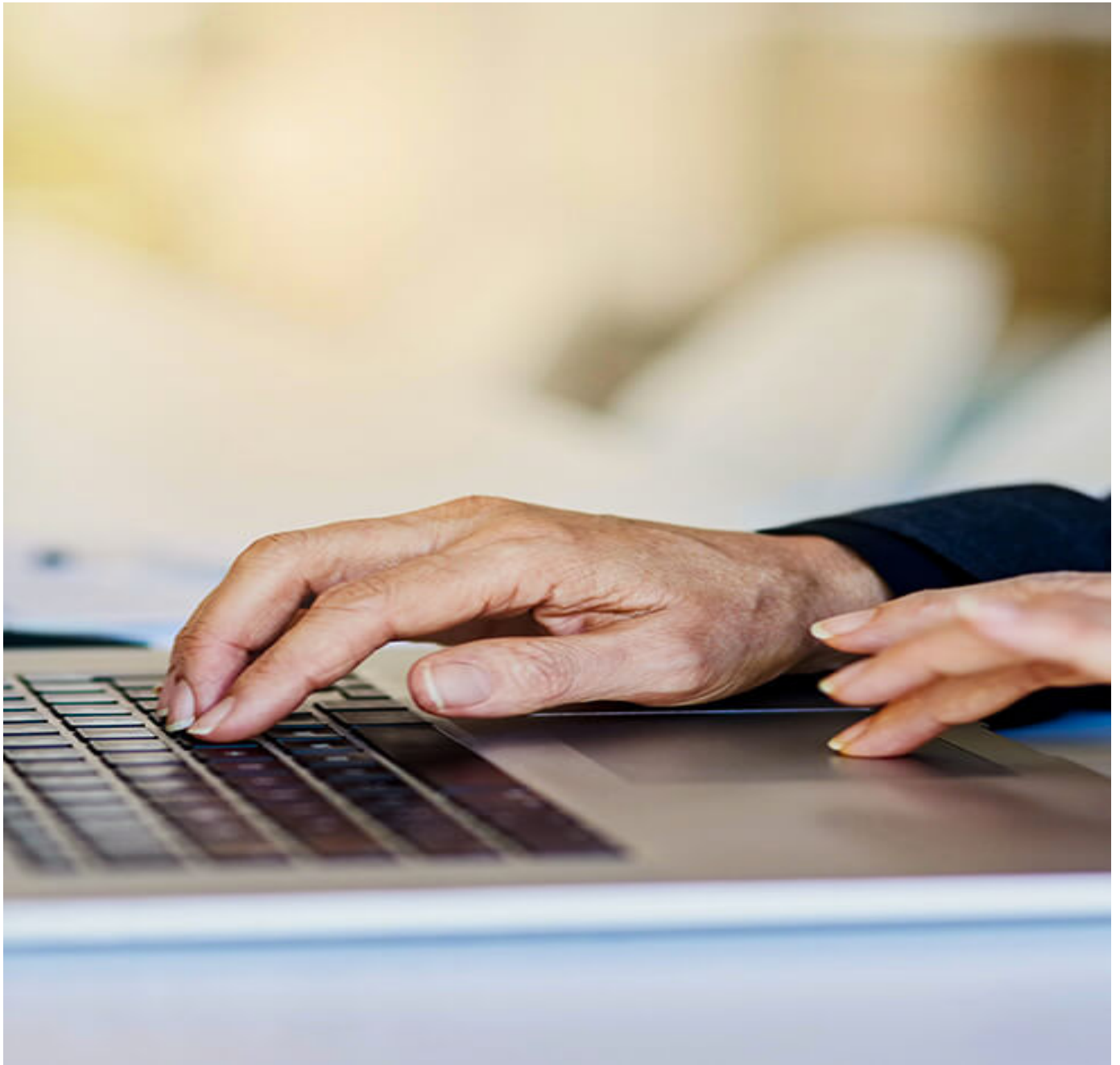
Haley & Aldrich
8801 Renner Blvd, Suite 400
Lenexa, KS 66219
Tel: 913.693.1900

Geometric Decoration

Image not found or type unknown

Geometric Decoration

Image not found or type unknown



Get in touch with Haley & Aldrich today