



## Missoula

Bringing value to clients in Montana and beyond.

Clients rely on our geotechnical engineering and environmental consulting.

Haley & Aldrich's Missoula office sits in the heart of the city near the Clark Fork River. Our contaminated site management consultants and other experts in Missoula provide counseling on areas that include:

- [Brownfields](#)
- [Construction](#)
- [Contaminated site management](#)
- [Disaster and climate resilience services](#)
- [EHS compliance](#)
- [Sustainability](#)
- [Geotechnical engineering](#)
- [Lean consulting](#)
- [Water resources](#)

From our Missoula office, our consultants partner with teams around the country to provide forward-thinking solutions that help clients meet regulatory requirements, maintain their reputation, and access cost-effective remediation.

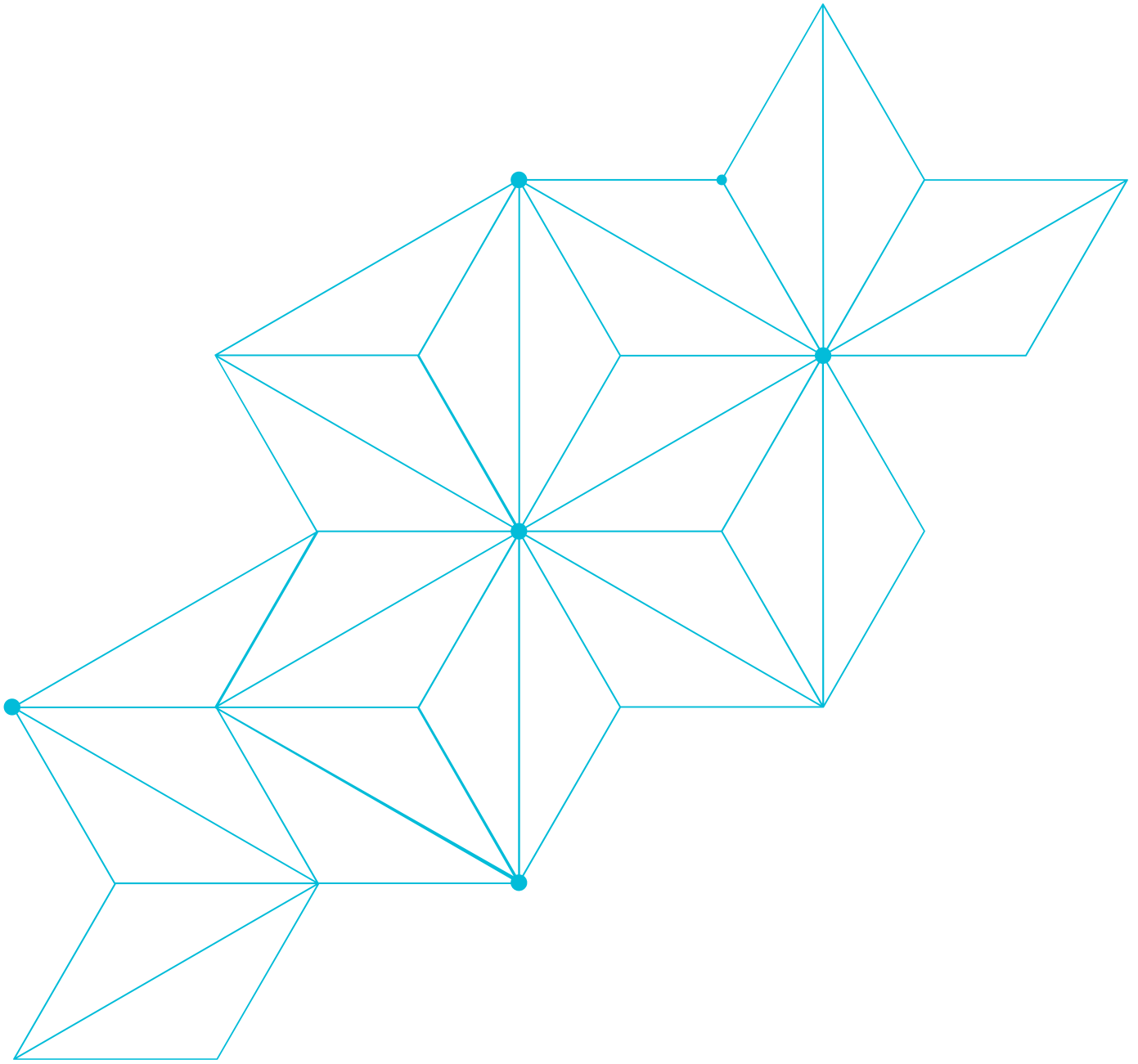


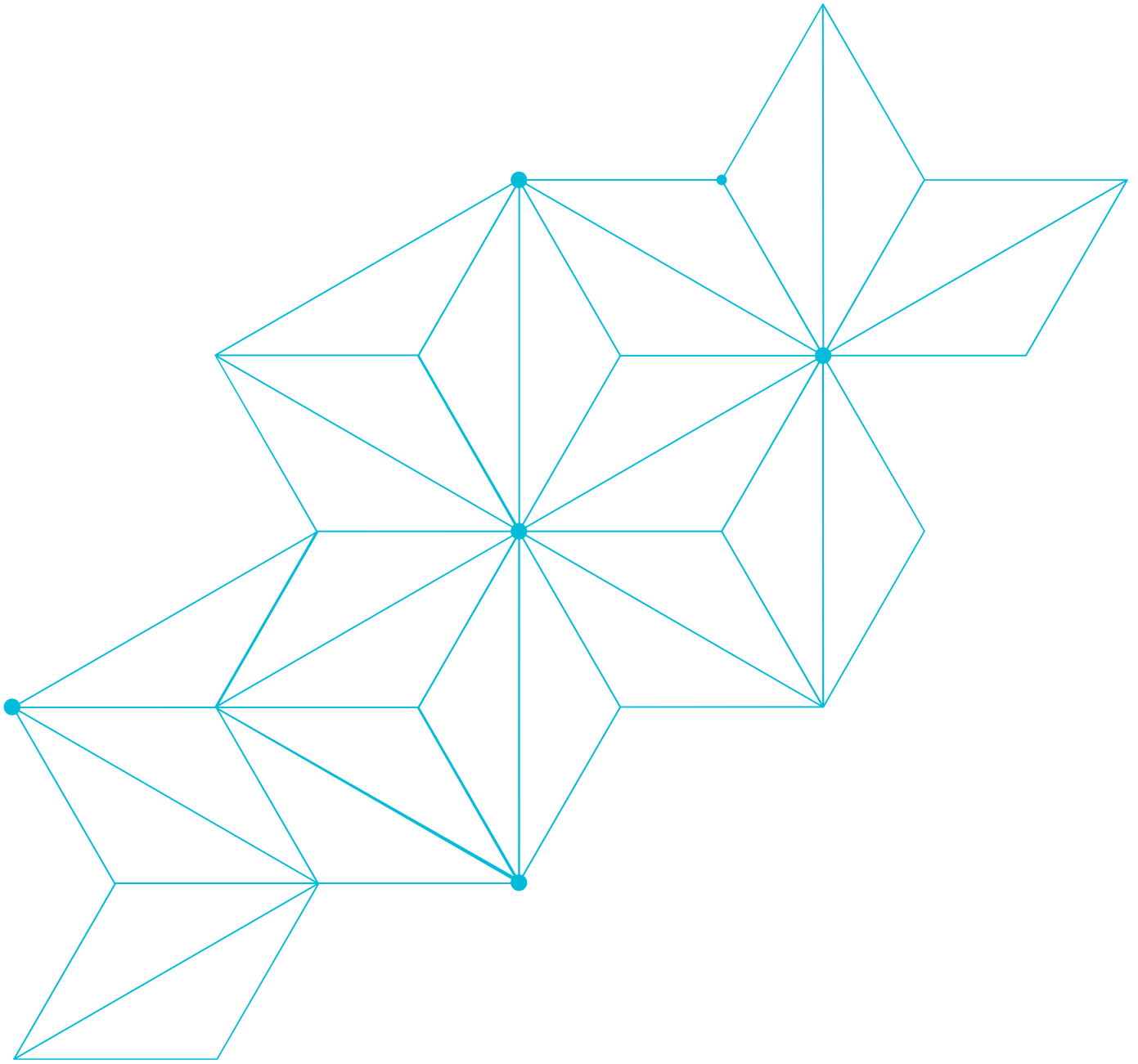
**Haley & Aldrich**

111 N Higgins Avenue, Suite 201

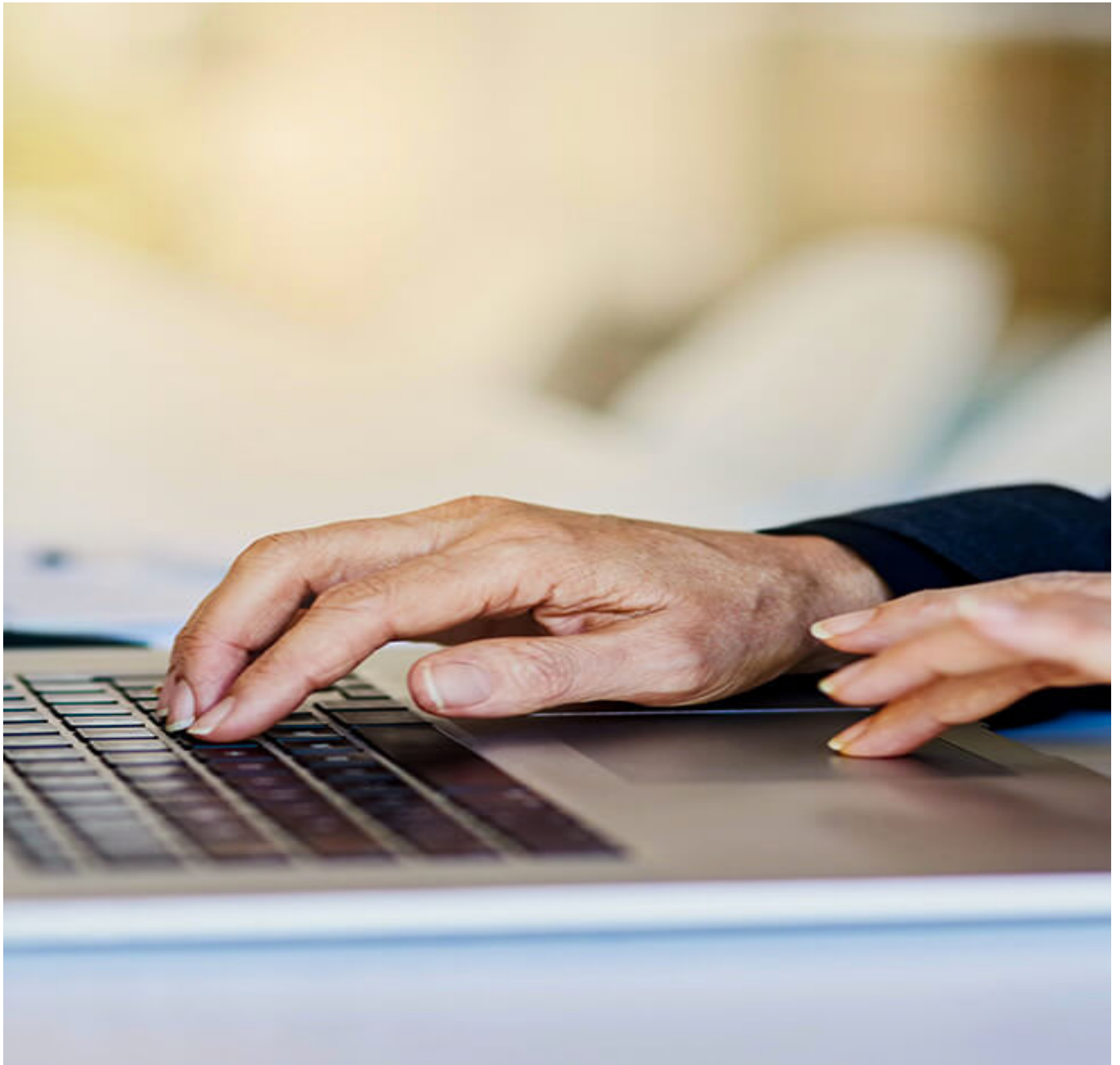
Missoula, MT 59802

Tel: 406.794.3395









Get in touch with Haley & Aldrich today