



Portland, Maine

Advising clients in New England and nationally.–

Clients rely on our geotechnical engineering and environmental consulting.

Located in the heart of downtown Portland, Haley & Aldrich's Maine office enables our experts to partner with clients on project that involve, among other areas:–

- [Brownfields](#)
- [Construction](#)
- [Contaminated site management](#)
- [Disaster and climate resilience services](#)
- [EHS compliance](#)
- [Sustainability](#)
- [Geotechnical engineering](#)
- [Lean consulting](#)
- [Water resources](#)

Regulatory requirements and the diverse geological landscape of New England present unique challenges for construction, development, and environmental projects. Haley & Aldrich offers specialized geotechnical engineering and environmental consulting in Portland, Maine, and throughout New England. With decades of expertise, we develop tailored engineering and environmental remediation strategies to address the region's complex considerations. By combining geotechnical engineering with environmental services such as sustainability consulting and [PFAS services](#), we provide integrated solutions that support sustainable development while ensuring compliance with strict regulatory standards.

Our [award-winning work](#) in Maine has helped keep critical infrastructure operational and safe. For example, through the collaborative design of the [foundation system](#) for a new bridge for Beals Island, we strengthened the community's only road to the mainland.

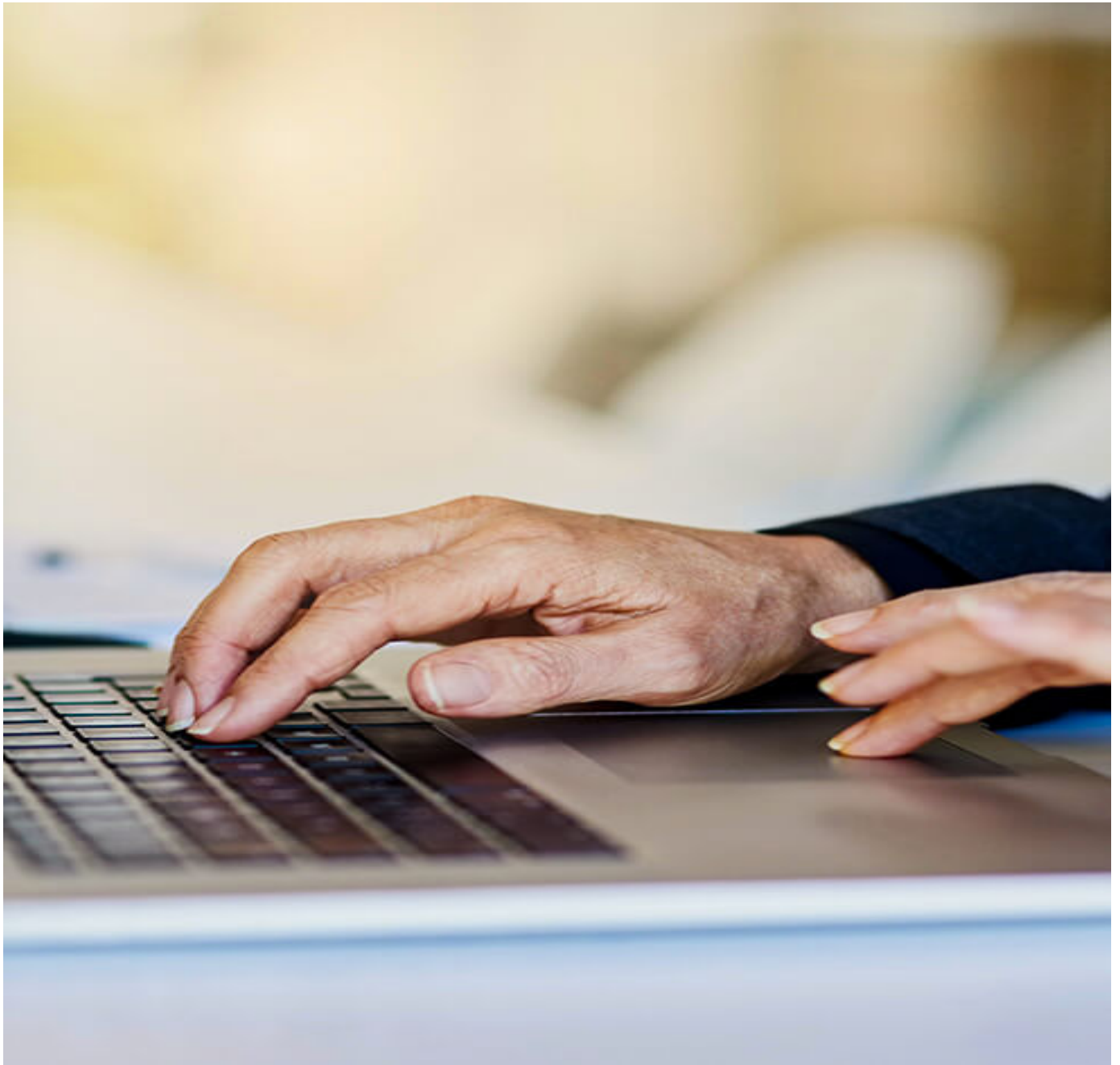
Haley & Aldrich
75 Washington Avenue, Suite 1A-
Portland, ME 04101-
Tel: 207.482.4600-

Geometric Decoration

Image not found or type unknown

Geometric Decoration

Image not found or type unknown



Get in touch with Haley & Aldrich today