



## Seattle

A Haley & Aldrich hub for Pacific Northwest clients.

# Clients rely on our geotechnical engineering and environmental consulting.

Overlooking the Puget Sound, Haley & Aldrich's Seattle office provides a base for Haley & Aldrich consultants to partner with clients around the country. Among other services, we focus on:

- [Brownfields](#)
- [Construction](#)
- [Contaminated site management](#)
- [Disaster and climate resilience services](#)
- [EHS compliance](#)
- [Sustainability](#)
- [Geotechnical engineering](#)
- [Lean consulting](#)
- [Water resources](#)

In addition to many other projects in Seattle, we managed foundation design and monitoring for the city's Climate Pledge Arena, an [award-winning project](#) that built an enduring city landmark. The arena is only blocks from the office, as are many other businesses, restaurants, and local landmarks.



**Haley & Aldrich**

3131 Elliott Avenue, Suite 600

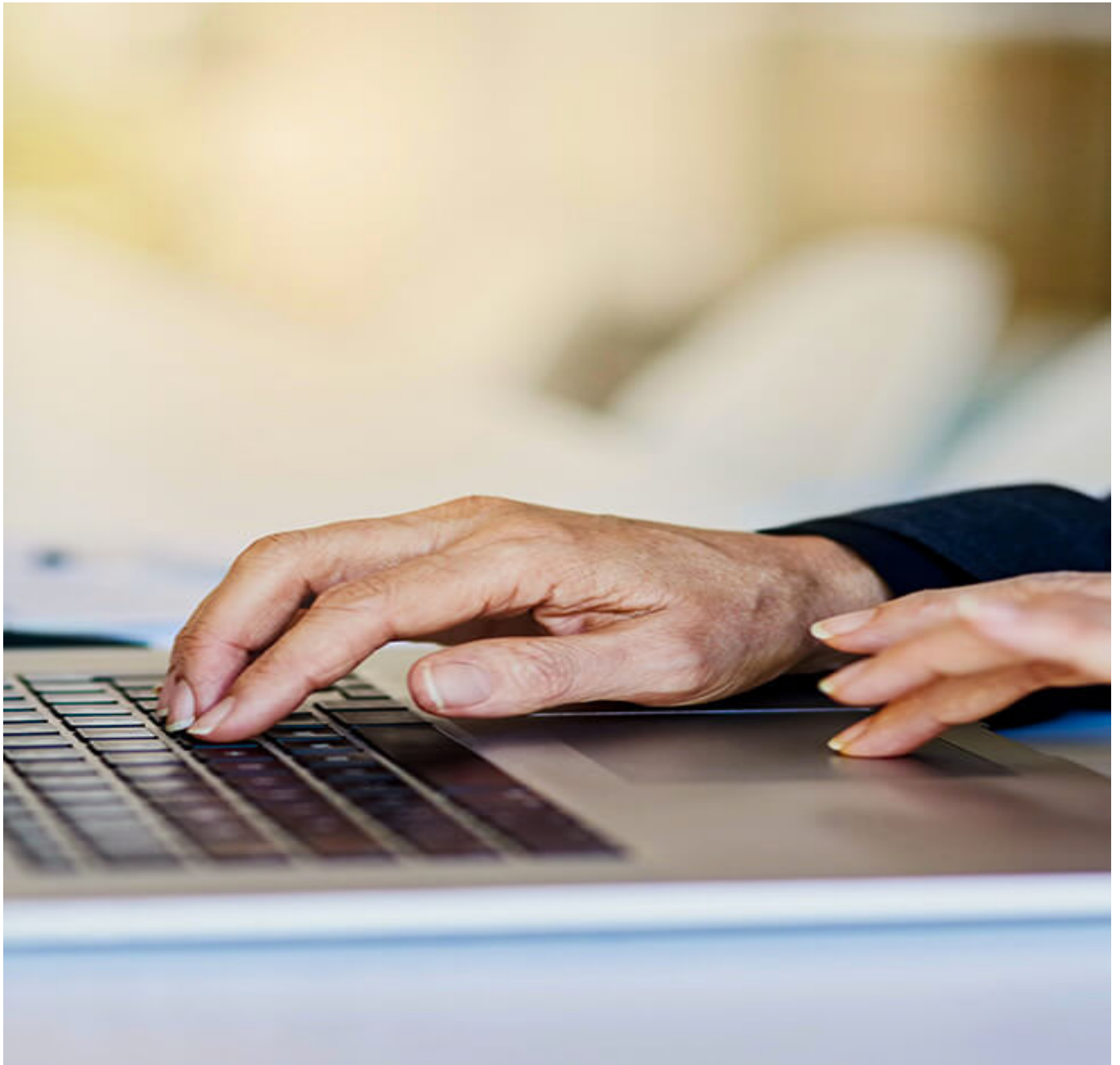
Seattle, WA 98121

Tel: 206.324.9530

---

Geometric DecorationGeometric Decoration





Get in touch with Haley & Aldrich today