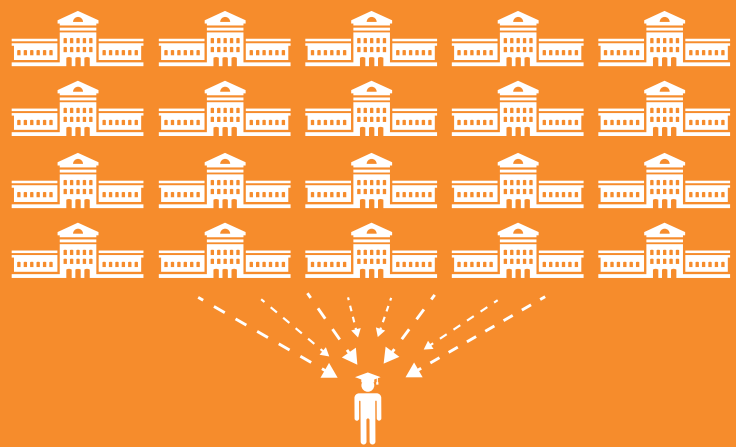


FOUR WAYS TO HELP

"CATCH UP" AND "KEEP UP"

WITH YOUR CAMPUS FACILITIES

Competition is
steep



Colleges need beautiful and state of the art campuses to attract students.

Older buildings need renovations.

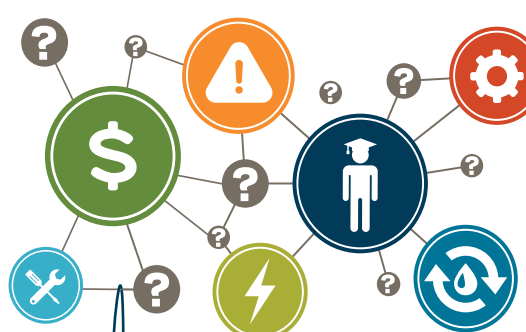
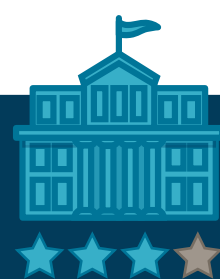


Newer buildings require upkeep.

There is often little money.



Some are doing
better than others.



Addressing these challenges is harder than it looks.

People may know **what** to do, but they don't know **how**.



What works for **one** campus doesn't necessarily work at **another**. Every campus, faculty, student body and mission is **unique**.



THERE
IS A

SOLUTION



Use **Lean** to put a dent in your facilities challenges, engage people and optimize results.

Lean is...

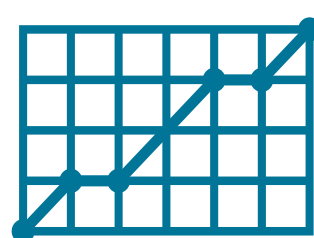
an approach that leverages the skills of people to help expose, understand and eliminate problems and rapidly improve processes while balancing both long- and short-term goals.

Systematically engaging your people – whether they are leaders, managers, or front-line staff – and innovating to find solutions, regardless of your organization's culture or unique challenges, is the **hidden power of Lean**.



Document your current facilities conditions

Don't have a facility condition assessment? The one you have is not current? Engage frontline workforce to use qualitative or quantitative data to identify their list of facilities needs.



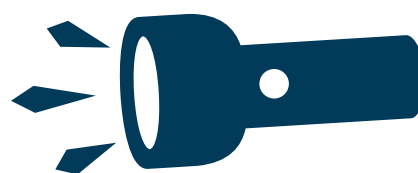
Gather stakeholders from across departments

Help all leaders understand needs and projects beyond their own lens into the system. Improving visibility among the group allows everyone to take on the challenges and make change together.



Create shared criteria for assessing projects

An agreed-upon set of criteria can illustrate the whole system of needs together, and will bring blind spots into light. By determining criteria and prioritization as a team, reaching consensus about what to tackle, and what to defer, is much easier and your focus becomes more strategic.



Implement and take "baby steps" to improve

Be realistic about what's possible in the short- and long-term. Understand the "current state," identify what your desired "future state" looks like, and focus on incremental improvement.



Sick of "catching up" and "keeping up" with your campus facilities? Turn your challenges into bright spots.

To learn more about how Lean can help you tackle your facilities challenges, read our blog.

**HALEY
ALDRICH**